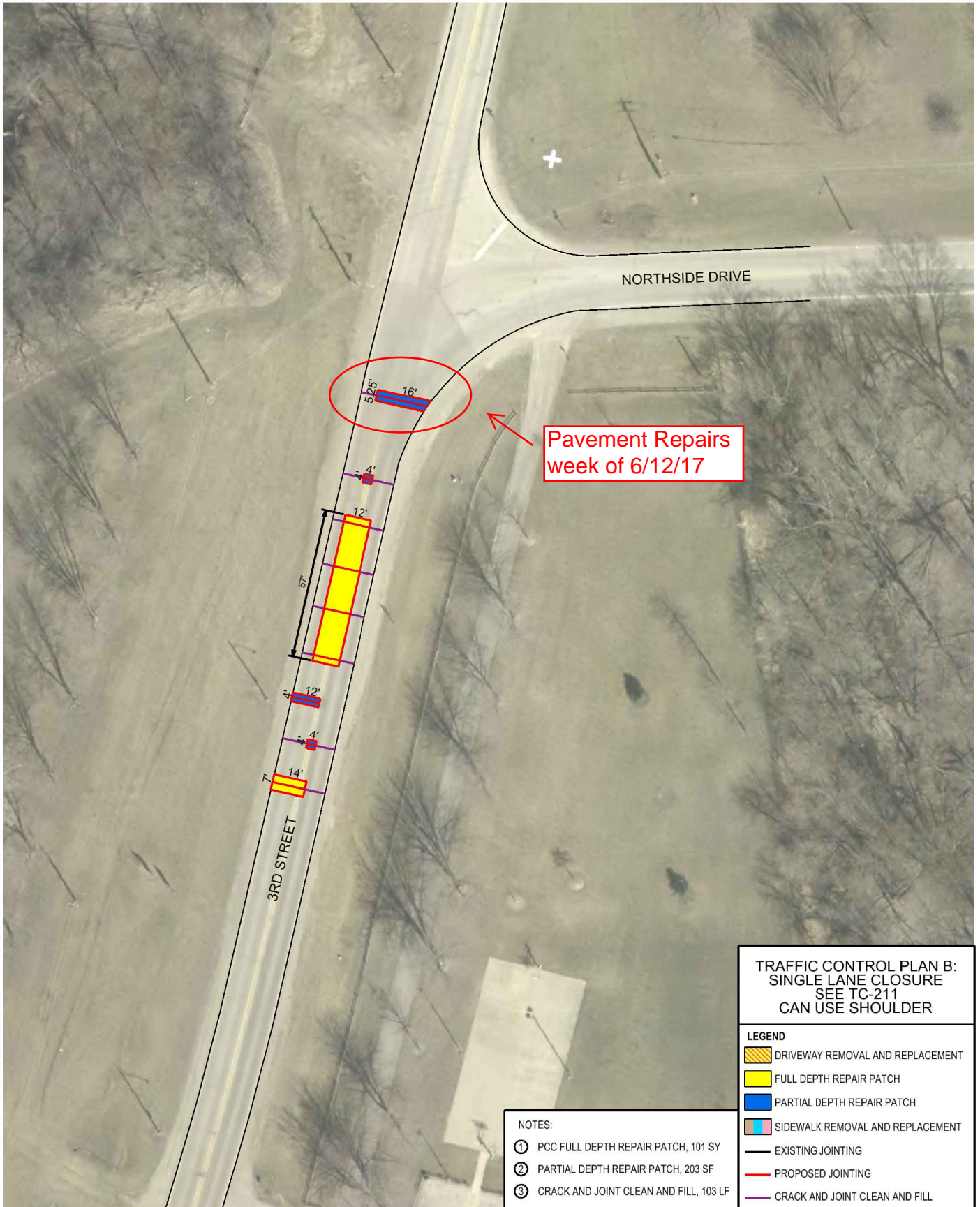


p:\r\SAAP\WISD\snyder-associates.com\ProjectWise\Documents\2016-Projects\116.0636\Cadd\Location7.dgn V8ColorHalfWeightPDF.pltcfq 11/8/2016 8:18:2016



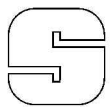
Pavement Repairs week of 6/12/17

**TRAFFIC CONTROL PLAN B:  
SINGLE LANE CLOSURE  
SEE TC-211  
CAN USE SHOULDER**

**LEGEND**

- DRIVEWAY REMOVAL AND REPLACEMENT
- FULL DEPTH REPAIR PATCH
- PARTIAL DEPTH REPAIR PATCH
- SIDEWALK REMOVAL AND REPLACEMENT
- EXISTING JOINTING
- PROPOSED JOINTING
- CRACK AND JOINT CLEAN AND FILL

- NOTES:**
- ① PCC FULL DEPTH REPAIR PATCH, 101 SY
  - ② PARTIAL DEPTH REPAIR PATCH, 203 SF
  - ③ CRACK AND JOINT CLEAN AND FILL, 103 LF



### POLK CITY: 2016 STREET REPAIR 3RD STREET AT NORTHSIDE DR PAVEMENT REPAIR

